

March

Competition Marches 2003

Shoals of Herring

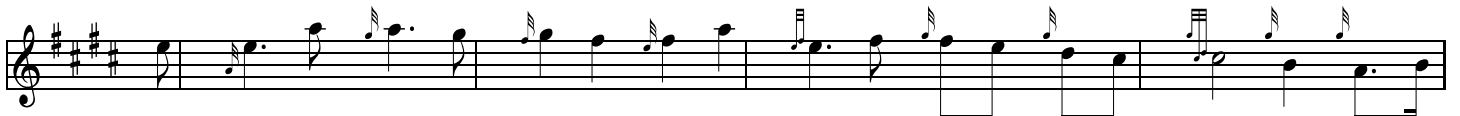
Musical score for 'Shoals of Herring' in G major and 3/4 time. The score consists of four staves. The first staff begins with a treble clef, a key signature of one sharp (F#), and a 3/4 time signature. The music features a rhythmic pattern of eighth and sixteenth notes. The second staff is marked '2 of 2' and includes a first ending bracket. The third and fourth staves continue the melodic line with various rhythmic values and repeat signs.

Battle of Waterloo

Musical score for 'Battle of Waterloo' in G major and 4/4 time. The score consists of four staves. The first staff begins with a treble clef, a key signature of one sharp (F#), and a 4/4 time signature. The music is characterized by a steady eighth-note accompaniment and a melodic line of quarter and eighth notes. The second and third staves continue the melodic development, while the fourth staff concludes the piece with a final cadence.

Rouan Tree

Musical score for 'Rouan Tree' in G major and common time (C). The score consists of two staves. The first staff begins with a treble clef, a key signature of one sharp (F#), and a common time signature. The music features a simple, rhythmic melody. The second staff continues the melody and concludes with a final cadence.



Jacks Welcome Home



Lord Lovac's Lament

